

Avalon by Sumit Gill



24852-12 | Border Stripe | Beige Multi | 10.75"W x 24" H



24851-74 | Tonal Medallion | Green



24851-12 | Tonal Medallion | Beige



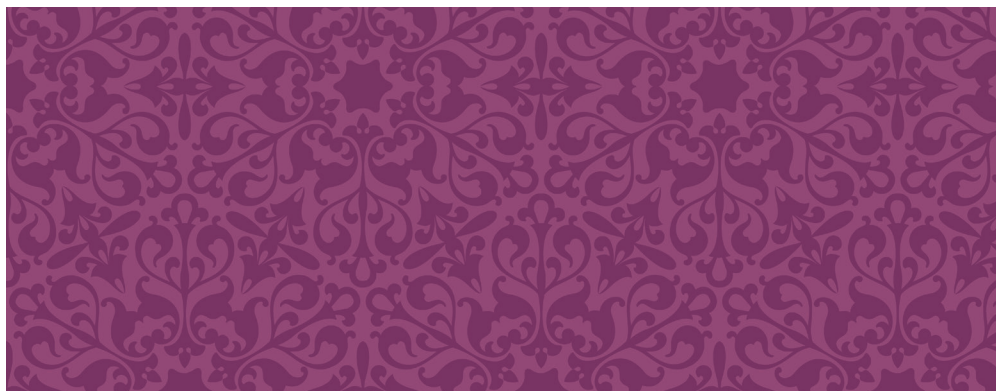
24847-49 | Packed Floral | Navy Multi



DP24845-12 | Triptic Panel | Beige Multi | 36"W x 43"H



24846-12 | Feature Floral with Birds | Beige Multi | 24" x 24"



24851-29 | Tonal Medallion | Wine



24850-49 | Mini Floral | Navy



24848-12 | Leaves | Beige



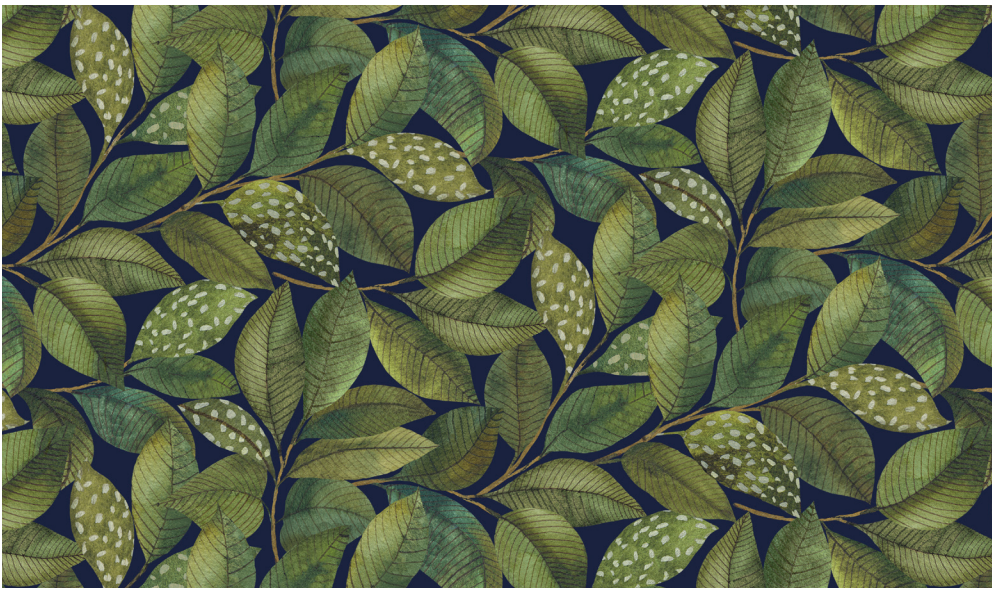
24850-29 Mini Floral-Wine



24849-49 Geometric-Navy



24846-49 | Feature Floral with Birds | Navy Multi



24848-49 | Leaves | Navy



24849-29 | Geometric | Wine



24847-12 | Packed Floral | Beige Multi

Avalon by Sumit Gill

Created by our newest talent and guest designer, Sumit Gill, Avalon is truly enchanting like its namesake. The exquisite 36" x 43" tryptic panel featured in Avalon is ideal as a dramatic wall-hanging or centre piece for a quilt. The panel can be used as is or deconstructed to create something new. Delicately detailed, multi-directional flora, foliage, and fauna, combined with contrasting geometrics are offered in rich luxurious shades of plum, green, cream and navy. The beautiful border stripe provides the perfect frame to finish your quilt. A selection of coordinating Toscana and Colorworks completes the collection.